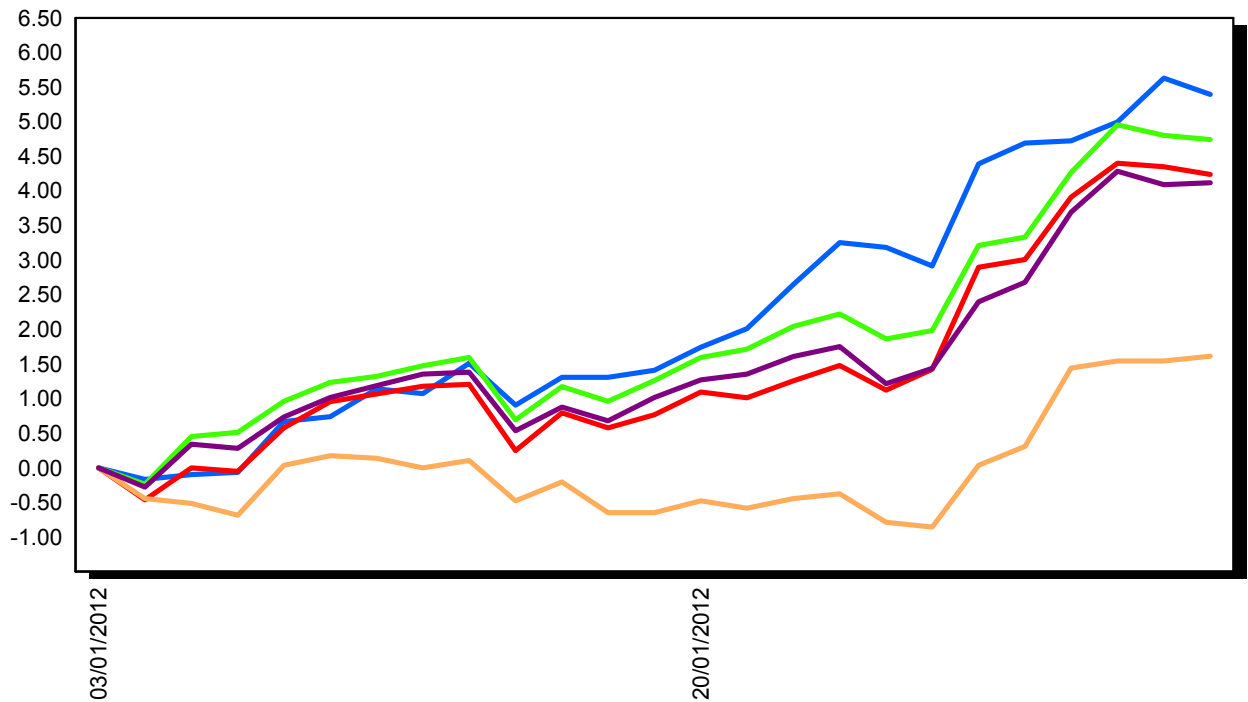


## Fund vs Fund By Company From 01 January, 2012 To 13 February, 2012



**(Fund-1) - PUBLIC ISLAMIC DIVIDEND FUND**

**(Fund-2) - PUBLIC ISLAMIC EQUITY FUND**

**(Fund-3) - PUBLIC ISLAMIC SECTOR SELECT FUND**

**(Fund-4) - PUBLIC ISLAMIC SELECT ENTERPRISES FUND**

**(Fund-5) - PUBLIC ISLAMIC SELECT TREASURES FUND**

Date	Fund-1 (RM)	(%)	Fund-2 (RM)	(%)	Fund-3 (RM)	(%)	Fund-4 (RM)	(%)	Fund-5 (RM)	(%)
03/01/2012	0.3547	0.00%	0.3331	0.00%	0.2916	0.00%	0.3658	0.00%	0.2984	0.00%
18/01/2012	0.3571	0.68%	0.3363	0.96%	0.2897	-0.65%	0.3679	0.57%	0.3023	1.31%
09/02/2012	0.3699	4.29%	0.3496	4.95%	0.2961	1.54%	0.3819	4.40%	0.3133	4.99%
13/02/2012	0.3693	4.12%	0.3489	4.74%	0.2963	1.61%	0.3813	4.24%	0.3145	5.40%

The information contained herein has been derived from sources believed to be reliable. No representation is given on and no liability or responsibility is assumed for the accuracy or completeness of this document. This document is provided to you for information purpose only and should not be construed as and shall not form part of an offer or solicitation to buy or sell any unit trusts. It may not be reproduced, distributed or published by any recipient for any purpose.